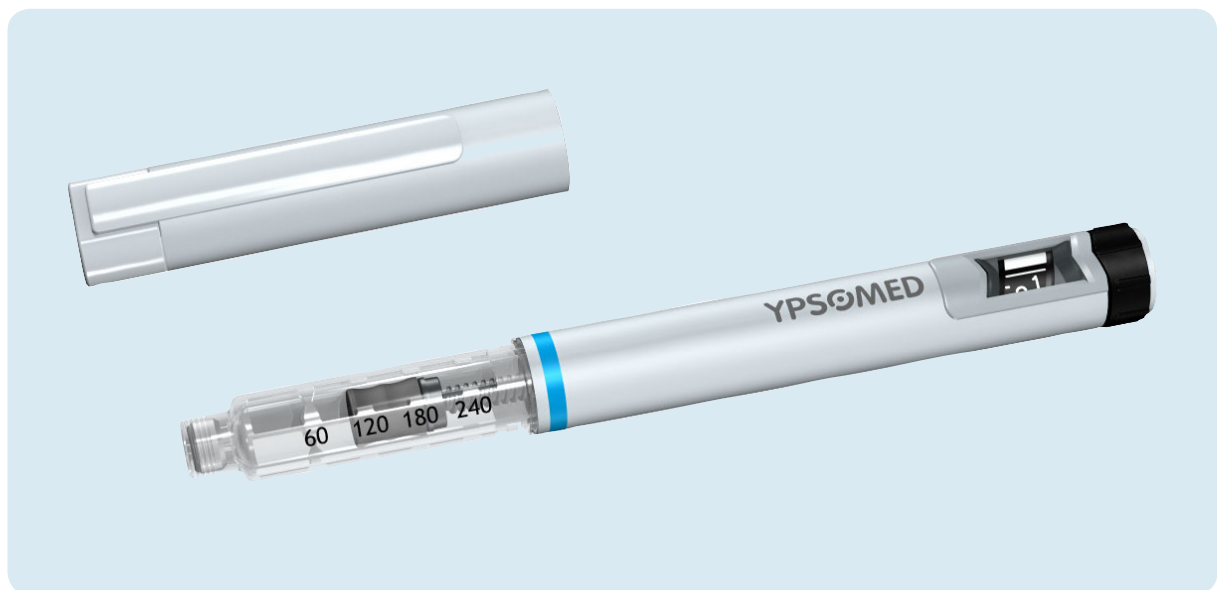


# UnoPen™



## Disposable Variable Dose Pen for Insulin and Other Therapies

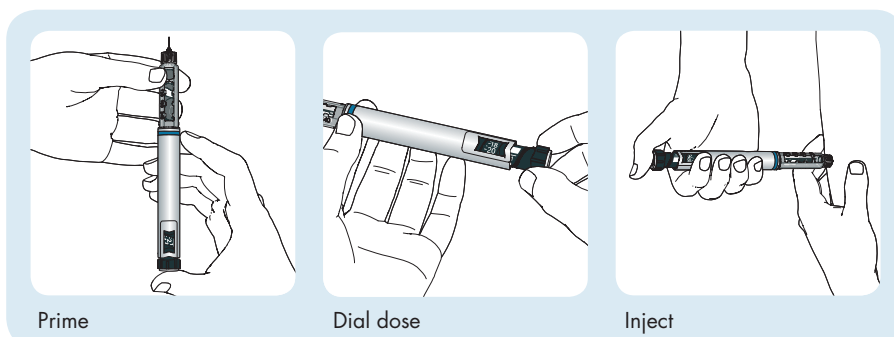
The state-of-the-art "dial & inject" disposable pen. Disposable pens are the most convenient solution for frequent subcutaneous self-injections. The pre-assembled pen and cartridge is ready for use and makes cartridge exchange unnecessary. The UnoPen™ is easy to customise for various drugs and therapies.

Multidose	Variable dose
Monodose	Fixed dose

### Features and benefits

- Ease of use: Well proven "dial & inject" handling concept
- Large numbers: Good readability even for visually impaired patients
- Dosing: Variable dosing in single steps from 1–60 IU, with dose correction
- Audible feedback during dose dialling and injection
- Visual end of injection feedback
- Short stroke of dose setting element, even for the highest selectable dose
- Stop-last-dose (stop-300): The dialled dose cannot exceed the volume remaining in the cartridge
- Easy to manufacture: Few parts with low complexity
- Easy to assemble in low and high volumes
- Cost-effective customisation through colour and labeling

### Main handling steps

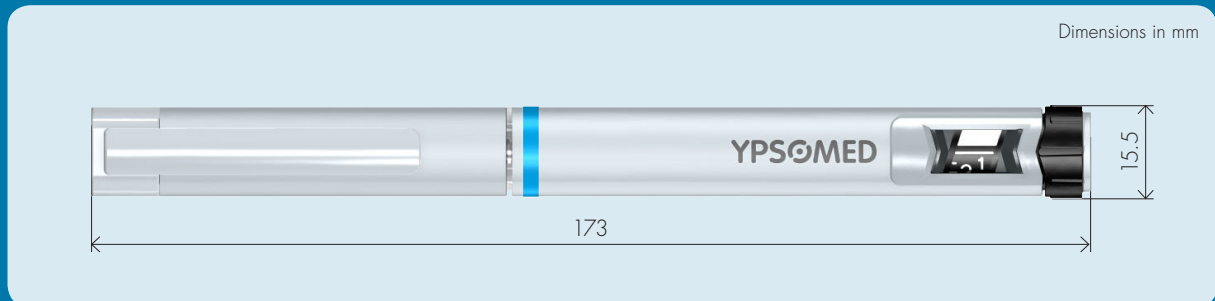


Prime

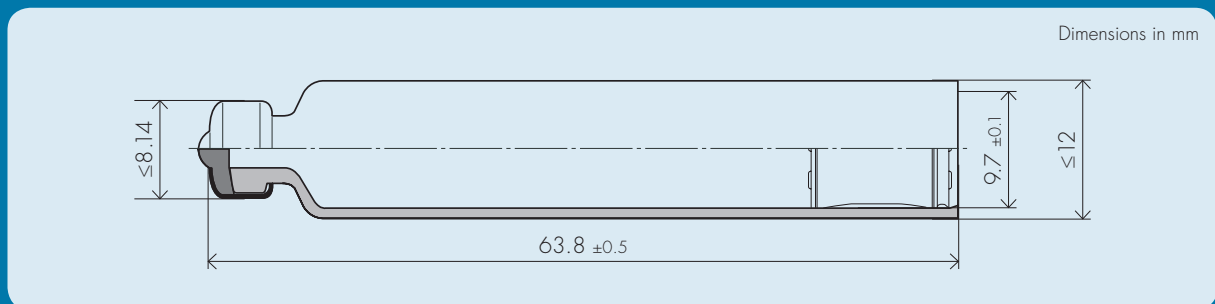
Dial dose

Inject

## Pen dimensions



## Cartridge type



Standard 3ml cartridge

COMPATIBILITY BETWEEN EACH NEW CARTRIDGE AND THE UnoPen™ REQUIRES VERIFICATION

## Pen specifications

- Min. dose: 1 IU (10 µl)
- Max. dose: 60 IU (600 µl)
- Number of dose increments: 60
- Compatible with standard and safety pen needles – Ypsomed Penfine®, Clickfine® and Clickfine® AutoProtect™ pen needles with unique click-on function are recommended and can be prepacked with every pen.